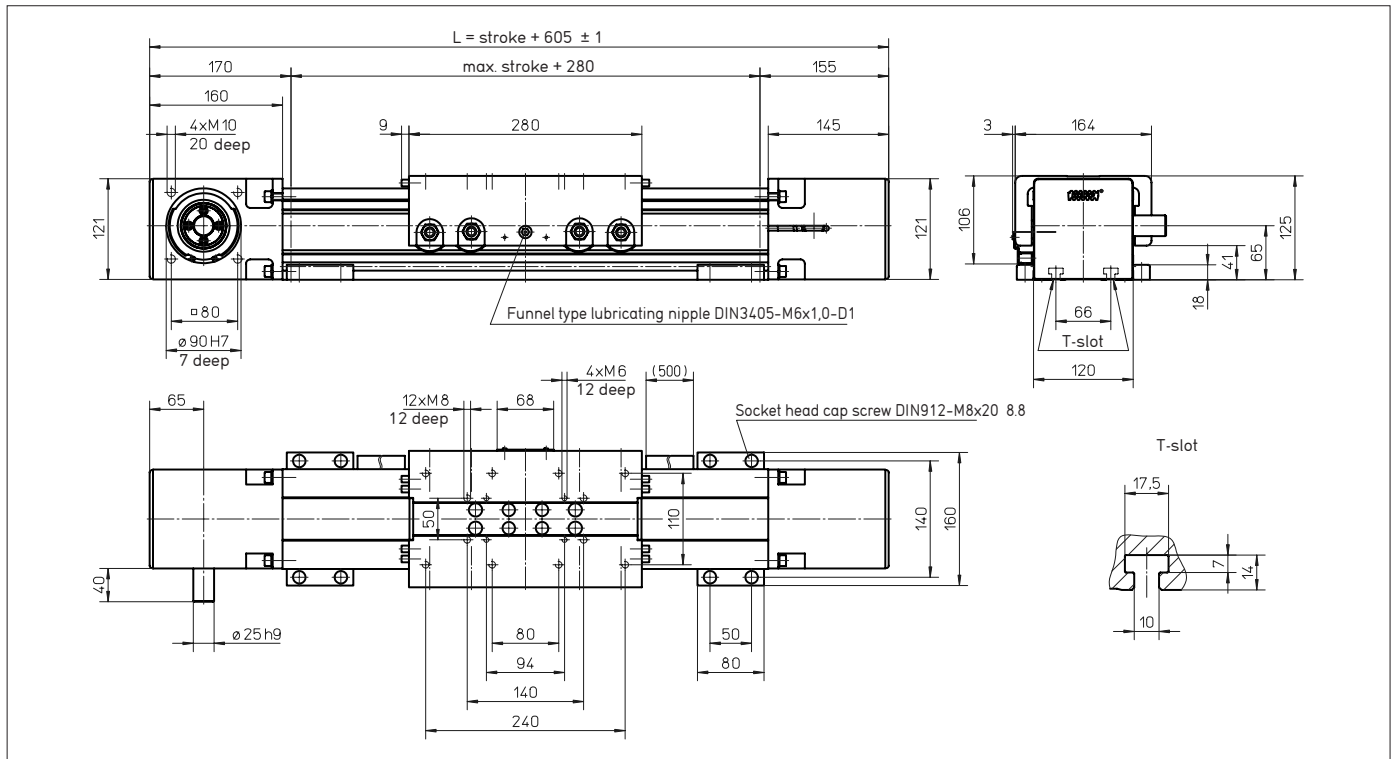


WIESEL SPEEDLine® WH120

with roller guideway and ATL toothed belt



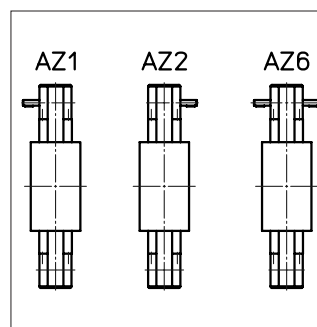
Note: Mounted wipers on request. The use of a long power bridge increases the total length.

Technical data

- Linear speed: _____ max. 10 m/s
- Repeatability: _____ ± 0.05 mm
- Acceleration: _____ max. 40 m/s²
- Drive element: _____ Toothed belt 50ATL10
- Pully diameter: _____ 82.76 mm
- Stroke per revolution: _____ 260 mm
- Stroke length: _____ up to 11000 mm
- Length of power bridge: _____ 280 or 520 mm, see page 26
- Geometrical moment of inertia: I_y 6.69 · 10⁶ mm⁴
 I_z 6.88 · 10⁶ mm⁴
- Weights
 - Basic unit with zero stroke: _____ 17.00 kg
 - 100 mm stroke: _____ 1.64 kg
 - Power bridge with carriage: _____ 5.50 kg
- Provided: _____ with 4 pieces KAO mounting brackets

Execution of drive shafts

(Detailed description see page 123)
Other executions on request.

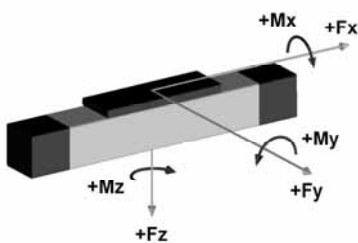


Idle torques [Nm]

Rotational speed [rpm]	M _{idle} [Nm]
150	4.8
1500	7.0
2308	10.0

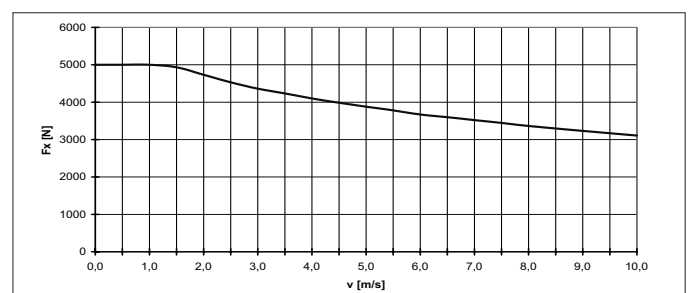
Note: For tube lengths of 4900 mm and over, the tubular profile is composed of two parts. The joint must be adequately supported. It may be possible to position the joint according to customer's wishes.

Loads and load moments



Load	dynam. [N]
F _x drive ¹⁾	max. 5000
F _y	4980
±F _z	9300
Load moment	dynam. [Nm]
M _x	500
M _y ²⁾	930
M _z ²⁾	500

F_x depending on the linear speed



Order Code see page 123

¹⁾ Depending on the speed, see respective chart.

²⁾ Increase of the admissible values by the use of a long power bridge or additional free-sliding power bridge (page 26 and 27).