

# Accessories ball screw drives

## Spiral spring cover

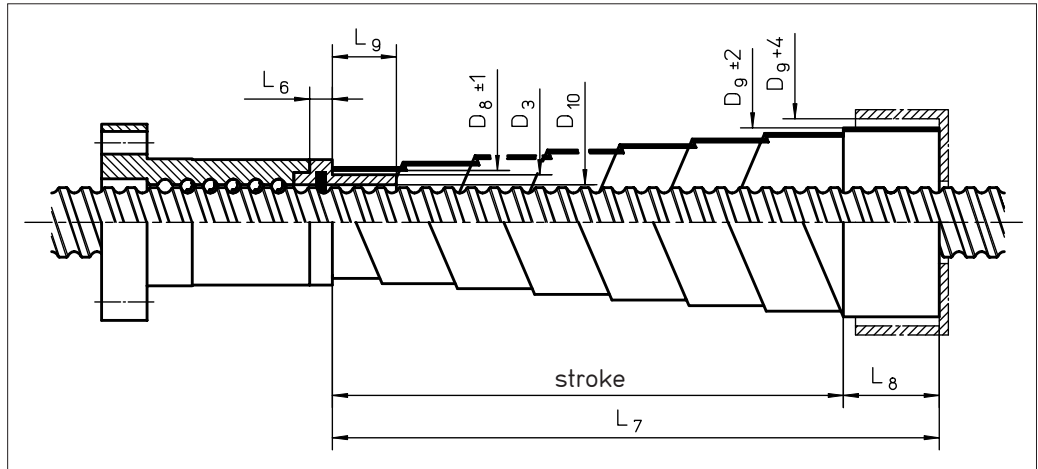
### Spiral spring cover SF

Spiral spring cover for protection against ambient influences. Suitable for horizontal and vertical installation position.

#### Material:

Tempered spring band steel

When a spiral spring cover is used, seal form Z (centering sleeve) is used on the attachment side of the ball-screw nut. (see order code page 62)



#### For KGT 1605 KGT 1610

$D_3 = 22 \text{ mm}$   
 $D_{10} = 17 \text{ mm}$   
 $L_6 = 6 \text{ mm}$   
 $L_9 = 21 \text{ mm}$

Type $D_8/L_{7V}^{1)/L_8}$	$L_{7h}^{2)}$	$D_9$
SF 25/100/20	60	35
SF 25/150/20	110	38
SF 25/200/20	160	41
SF 25/250/20	210	44
SF 25/300/30	240	43
SF 25/350/30	290	46
SF 25/400/30	340	49
SF 25/450/40	370	48
SF 25/500/40	420	51

#### For KGT 2505 KGT 2510 KGT 2520

$D_3 = 28 \text{ mm}$   
 $D_{10} = 26 \text{ mm}$   
 $L_6 = 6 \text{ mm}$   
 $L_9 = 21 \text{ mm}$

Type $D_8/L_{7V}^{1)/L_8}$	$L_{7h}^{2)}$	$D_9$
SF 30/150/30	90	39
SF 30/250/30	190	44
SF 30/350/30	290	49
SF 30/450/40	370	53
SF 30/550/40	470	58
SF 30/650/50	550	55
SF 30/750/50	650	59

#### For KGT 3205 KGT 3240 (continued)

$D_3 = 38 \text{ mm}$   
 $D_{10} = 33 \text{ mm}$   
 $L_6 = 6 \text{ mm}$   
 $L_9 = 26 \text{ mm}$

Type $D_8/L_{7V}^{1)/L_8}$	$L_{7h}^{2)}$	$D_9$
SF 40/550/50	450	61
SF 40/650/50	550	66
SF 40/750/50	650	69
SF 40/450/60	330	55
SF 40/550/60	430	58
SF 40/650/60	530	62
SF 40/750/60	630	66
SF 40/900/60	780	70
SF 40/650/75	500	63
SF 40/750/75	600	66
SF 40/900/75	750	72
SF 40/1100/75	950	78
SF 40/1300/75	1150	84
SF 40/1500/75	-	87
SF 40/1000/100	800	69
SF 40/1200/100	1000	71
SF 40/1500/100	1300	79
SF 40/1800/100	1600	82
SF 40/1800/120	1560	83
SF 40/2000/120	1760	86
SF 40/2200/120	-	91

#### For KGT 3210 (KGT 3220)

$D_3 = 44 \text{ (48) mm}$   
 $D_{10} = 35 \text{ mm}$   
 $L_6 = 8 \text{ mm}$   
 $L_9 = 27 \text{ mm}$

Type $D_8/L_{7V}^{1)/L_8}$	$L_{7h}^{2)}$	$D_9$
SF 50/150/30	90	63
SF 50/250/30	190	68
SF 50/250/50	150	62
SF 50/350/50	250	66
SF 50/450/50	350	70
SF 50/550/50	450	73
SF 50/550/60	430	68
SF 50/650/60	530	73
SF 50/750/60	630	76
SF 50/750/75	600	78
SF 50/900/75	750	84
SF 50/1100/75	950	90
SF 50/1100/100	900	77
SF 50/1300/100	1100	80
SF 50/1500/100	1300	87
SF 50/1800/100	-	94
SF 50/1700/120	1460	91
SF 50/1900/120	1660	97
SF 50/2100/120	1860	102
SF 50/2300/120	-	105
SF 50/2500/120	-	111
SF 50/2800/120	-	118
SF 50/2800/150	2500	119
SF 50/3000/150	-	124
SF 50/3000/180	2640	123
SF 50/3250/180	-	130
SF 50/3250/200	2850	128
SF 50/3500/200	-	134

#### For KGT 2005 KGT 2020 KGT 2050

$D_3 = 26 \text{ mm}$   
 $D_{10} = 21 \text{ mm}$   
 $L_6 = 6 \text{ mm}$   
 $L_9 = 21 \text{ mm}$

Type $D_8/L_{7V}^{1)/L_8}$	$L_{7h}^{2)}$	$D_9$
SF 30/150/30	90	39
SF 30/250/30	190	44
SF 30/350/30	290	49
SF 30/450/40	370	53
SF 30/550/40	470	58
SF 30/650/50	550	55
SF 30/750/50	650	59

#### For KGT 3205 KGT 3240

$D_3 = 38 \text{ mm}$   
 $D_{10} = 33 \text{ mm}$   
 $L_6 = 6 \text{ mm}$   
 $L_9 = 26 \text{ mm}$

Type $D_8/L_{7V}^{1)/L_8}$	$L_{7h}^{2)}$	$D_9$
SF 40/150/30	90	51
SF 40/250/30	190	56
SF 40/350/30	290	60
SF 40/450/40	370	64
SF 40/550/40	470	68
SF 40/350/50	250	55
SF 40/450/50	350	59

<sup>1)</sup>  $L_{7V} = L_7$  vertical installation  
<sup>2)</sup>  $L_{7h} = L_7$  horizontal installation

# Accessories ball screw drives

## Spiral spring cover

### For KGT 4005 KGT 4040

D<sub>3</sub> = 48 mm  
D<sub>10</sub> = 42 mm  
L<sub>6</sub> = 6 mm  
L<sub>9</sub> = 26 mm

Type	L <sub>7h</sub> <sup>2)</sup>	D <sub>9</sub>
SF 50/150/30	90	63
SF 50/250/30	190	68
SF 50/250/50	150	62
SF 50/350/50	250	66
SF 50/450/50	350	70
SF 50/550/50	450	73
SF 50/550/60	430	68
SF 50/650/60	530	73
SF 50/750/60	630	76
SF 50/750/75	600	78
SF 50/900/75	750	84
SF 50/1100/75	950	90
SF 50/1100/100	900	77
SF 50/1300/100	1100	80
SF 50/1500/100	1300	87
SF 50/1800/100	–	94
SF 50/1700/120	1460	91
SF 50/1900/120	1660	97
SF 50/2100/120	1860	102
SF 50/2300/120	–	105
SF 50/2500/120	–	111
SF 50/2800/120	–	118
SF 50/2800/150	2500	119
SF 50/3000/150	–	124
SF 50/3000/180	2640	123
SF 50/3250/180	–	130
SF 50/3250/200	2850	128
SF 50/3500/200	–	134

### For KGT 4010 KGT 4020

D<sub>3</sub> = 53 mm  
D<sub>10</sub> = 46 mm  
L<sub>6</sub> = 10 mm  
L<sub>9</sub> = 35 mm

Type	L <sub>7h</sub> <sup>2)</sup>	D <sub>9</sub>
SF 55/150/30	90	68
SF 55/250/30	190	73
SF 55/250/50	150	66
SF 55/350/50	250	71
SF 55/450/50	350	74
SF 55/550/50	450	77
SF 55/550/60	430	75
SF 55/650/60	530	79
SF 55/750/60	630	83
SF 55/750/75	600	83
SF 55/900/75	750	89
SF 55/1100/75	950	94
SF 55/1100/100	900	88
SF 55/1300/100	1100	89
SF 55/1500/100	1300	94
SF 55/1800/100	–	102
SF 55/1700/120	1460	96
SF 55/1900/120	1660	103
SF 55/2100/120	1860	106
SF 55/2300/120	2060	110
SF 55/2500/120	–	117
SF 55/2800/120	–	119
SF 55/2800/150	2500	122
SF 55/3000/150	–	126
SF 55/3000/180	2640	127
SF 55/3250/180	–	130

### For KGT 5010 KGT 5020

D<sub>3</sub> = 62 mm  
D<sub>10</sub> = 56 mm  
L<sub>6</sub> = 11 mm  
L<sub>9</sub> = 39 mm

Type	L <sub>7h</sub> <sup>2)</sup>	D <sub>9</sub>
SF 65/250/30	190	85
SF 65/250/50	150	76
SF 65/350/50	250	83
SF 65/450/50	350	88
SF 65/550/60	430	88
SF 65/650/60	530	92
SF 65/750/60	630	96
SF 65/750/75	600	93
SF 65/900/75	750	99
SF 65/1100/75	950	107
SF 65/1100/100	900	95
SF 65/1300/100	1100	100
SF 65/1500/100	1300	109
SF 65/1800/100	–	120
SF 65/1700/120	1460	106
SF 65/1900/120	1660	109
SF 65/2100/120	1860	113
SF 65/2300/120	2060	118
SF 65/2500/120	–	128
SF 65/2800/120	–	132
SF 65/2800/150	2500	133
SF 65/3000/150	–	139
SF 65/3000/180	2640	136
SF 65/3250/180	–	146
SF 65/3250/200	2850	140

### For KGT 6310

D<sub>3</sub> = 74 mm  
D<sub>10</sub> = 68 mm  
L<sub>6</sub> = 11 mm  
L<sub>9</sub> = 49 mm

Type	L <sub>7h</sub> <sup>2)</sup>	D <sub>9</sub>
SF 75/250/50	150	89
SF 75/350/50	250	94
SF 75/450/50	350	101
SF 75/550/60	430	100
SF 75/650/60	530	103
SF 75/750/60	630	109
SF 75/650/75	500	99
SF 75/750/75	600	104
SF 75/900/75	750	111
SF 75/1100/100	900	108
SF 75/1300/100	1100	114
SF 75/1500/100	1300	120
SF 75/1700/100	1500	126
SF 75/1500/120	1260	115
SF 75/1800/120	1560	125
SF 75/2000/120	1760	128
SF 75/2200/120	–	132
SF 75/2000/150	1700	135
SF 75/2400/150	2100	141
SF 75/2800/150	–	145
SF 75/2800/180	2440	142
SF 75/3000/180	–	148
SF 75/3250/180	–	156
SF 75/3250/200	2850	148
SF 75/3500/200	–	158

<sup>1)</sup> L<sub>7v</sub> = L<sub>7</sub> vertical installation  
<sup>2)</sup> L<sub>7h</sub> = L<sub>7</sub> horizontal installation